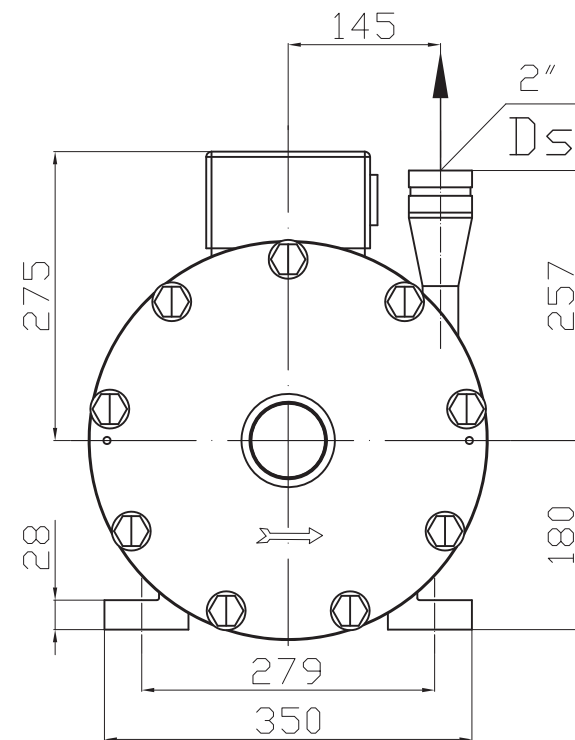
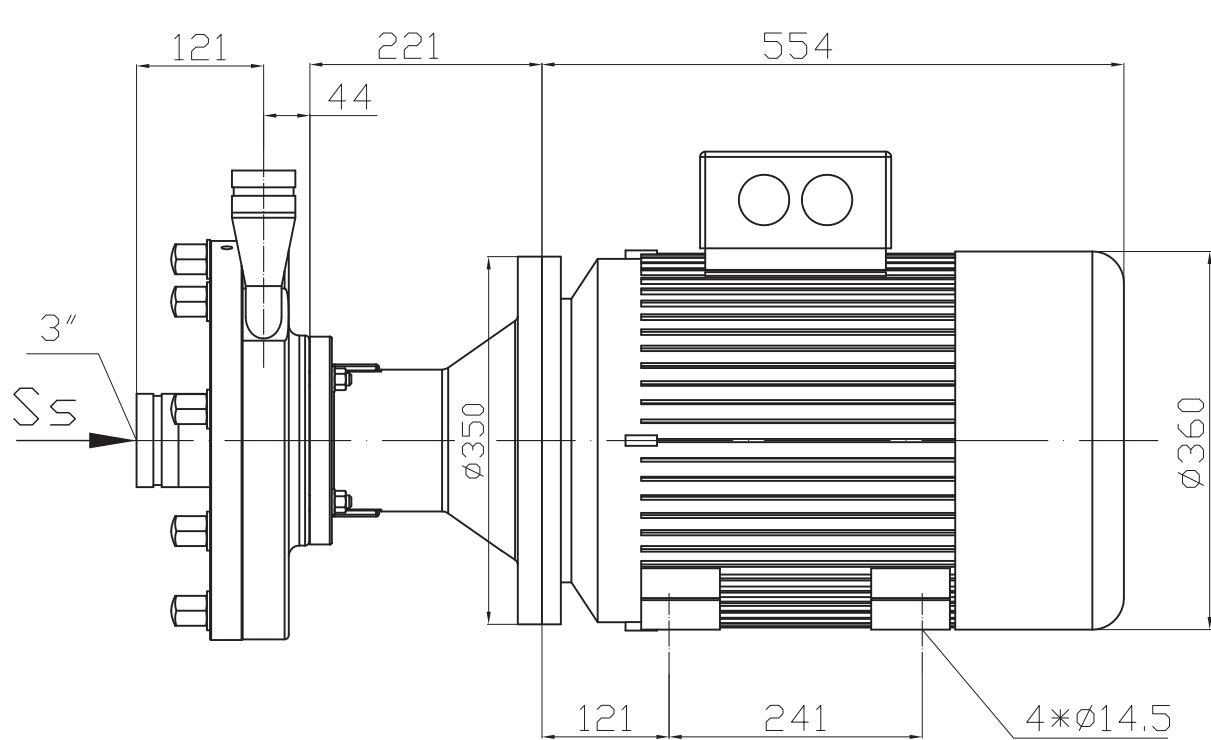


12.5/ 6.3/ 3.2/ 1.6/ 0.8/ 0.4/ 0.2/ 0.1



Fomac Pumps CO., LTD.

FH25-22kw-高压焊接短管

**Fomac**  
pumps

Drawn  
Date  
Approved

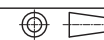
Rory

Material  
Quantity  
Weight

316L  
1

Scale  
View  
Version

Description



00